



Enhancing clinical breast exams for better breast health - for all



an innovation from
UE LifeSciences

Over 500,000 Women Examined Worldwide

Health Equity Innovation Backed by Multiple Publications

Globally Recognized Award-Winning Technology

FDA

Cleared

2022 Global Women's HealthTech Award



Consumer
Technology
Association



International
Finance Corporation
WORLD BANK GROUP

2021 Thought Leader



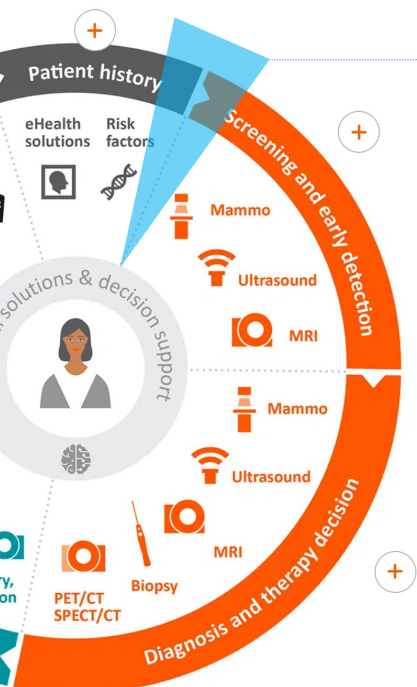


Ultra Portable Hand-held Breast Exam. Radiation-Free. Easily Operable by Care Providers. Minimal Training. Wireless. Battery Powered. Cloud Connected. Point of Care with Instant Results.

"An objective, quick, and painless documentation of routine breast exams inform and empower care providers and women, especially those younger than 40, with dense breasts, or with family history."

Brian Englander, MD

Chairman of the Department of Radiology at Pennsylvania Hospital



An essential component of 360-degree breast care

iBreastExam is

- US FDA cleared for breast lesion documentation during CBE
- Non-invasive, Radiation-free Breast Examination Device
- Usable virtually anywhere and for all adult women

iBreastExam is NOT

- A screening tool for breast cancer
- A replacement for mammogram, Ultrasound or MRI



Confidence for you,
peace of mind for your patients



Value Proposition

- Create a record of your CBEs in a consistent and repeatable format
- Incorporate reports into EMR systems and workflows
- Potentially find hard to palpate lesions
- Reassure patients ineligible for routine mammograms, or with dense breasts
- Documentation using iBreastExam supports your clinical expertise and reinforces any decision to seek further diagnostic imaging
- iBreastExam studies report high sensitivity (84-87%), specificity (80-94%), and negative predictive value (94-98%)



Breast lesions are stiffer than normal breast tissue; their contrast in tissue elasticity is measurable in real-time.

iBreastExam's innovative Dynamic Co-Planar Capacitive Sensing (DCPC) Technology can detect stiff breast lumps early, at the point of care.